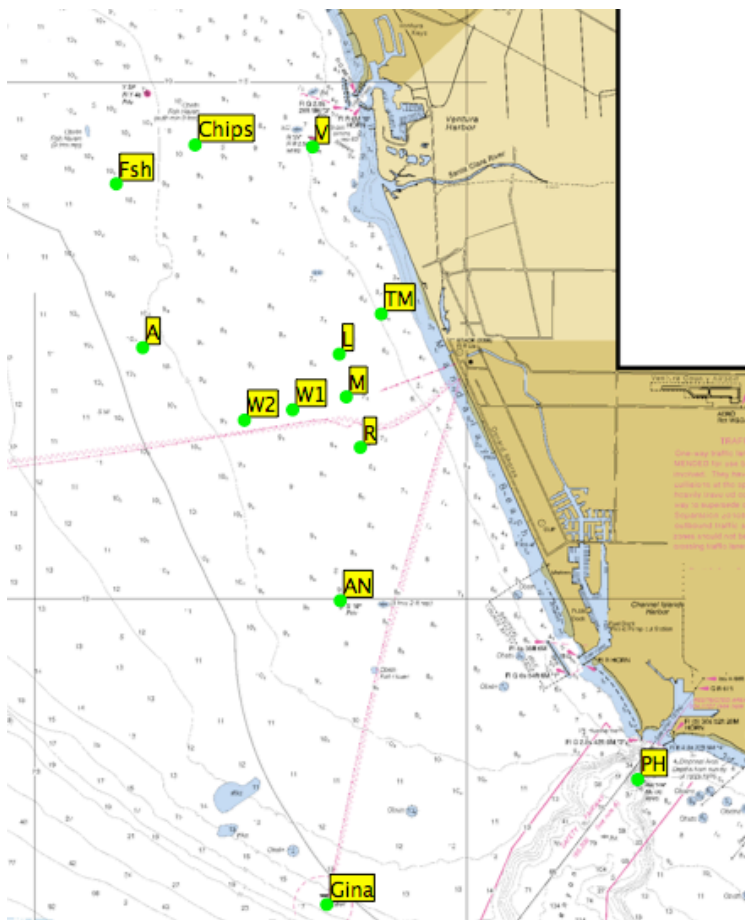


# PCYC Course chart

# VCORC three races on one day

Course	Description	Distance
1	ST - As - Vs - F	7.0
2	ST - ANs - FSs - F	9.6
3	ST - FSp - F	6.0
4	ST - Gip - F	9.8
5	ST - ANp - Vp - F	8.8
6	ST - W1p - Rp - Lp - F	2.6
7	ST - W2p - Rp - Lp - F	3.5
8	ST - W2s - Vs - F	6.2
9	ST - W2p - FSp - F	6.6
10	ST - Ap - Mp - CHp - Ap - F	10.8
11	ST - Ap - ANp - As - F	10.2
12	ST - ANs - As - F	7.1
13	ST - ANp - Mp - As - F	8.0
14	ST - Vs - F	4.9
15	ST - TMp - Vp - Anp - F	9.0
16	ST - TMs - Ans - Vs - F	10.5
17	ST - Vp - Anp - F	8.8
18	ST - Vp - FSp - F	7.4
19	ST - TMs - GIs - F	11.5
20	ST - TMp - CHp - ANp - F	9.9
21	ST - PHp - F	9.3
22	ST - Ap - Anp - F	7.1



Mark ID	Mark Description	Latitude	Longitude
AN	Anacapa YC spar buoy, or "Wes" mark	34N 09.798	119W 16.390
FS	Fish Sticks Spar Buoy	34N 14.042	119W 19.550
GI	Platform Gina	34N 07.066	119W 16.607
M	Mandalay Spar Buoy	34N 11.963	119W.16.390
V	Ventura Harbor Whistle Buoy R2	34N 14.033	119W 16.725
CH	Chips Spar Buoy	34N 14.400	119W.18.140
A	Inflatable A mark about 2 NM west of M	34N 12.430	119W 18.430
W1	Inflatable mark set approx 1/2 NM to windward of Start		
W2	Inflatable mark set approx 1 NM to windward of Start		
L	Inflatable leeward mark set approx 1/2 NM to leeward of Start		
R	Inflatable reaching mark set approx 1/2 NM to windward of Start		
TM	Inflatable mark inshore of M		
ST	M is Pin end of Start Line		
F	Finish		



**Starting Line**

is between the RC boat and the Mandalay spar buoy offshore of the power plant. At approximately

34N 11.963 119W.16.390



**Class flags**

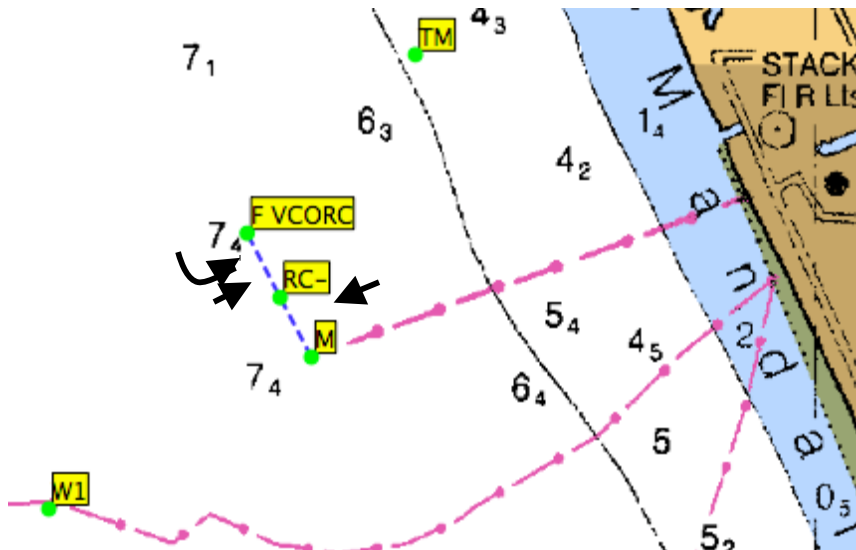
- Class A Yellow
- Class B Red
- Class C White
- Class D Green
- Class E Pink
- Class F Blue

**Start configuration**

ST pin Mandalay ----- RC boat ----- F



Start from this side of the line  
RC boat is starboard end



**Finish**

Next to ST line: From RC boat to orange mark F

**Finish configuration**

RC boat is PORT end of finish line

ST pin Mandalay ----- RC boat ----- F



Finish from this side of the line  
From Ventura area marks