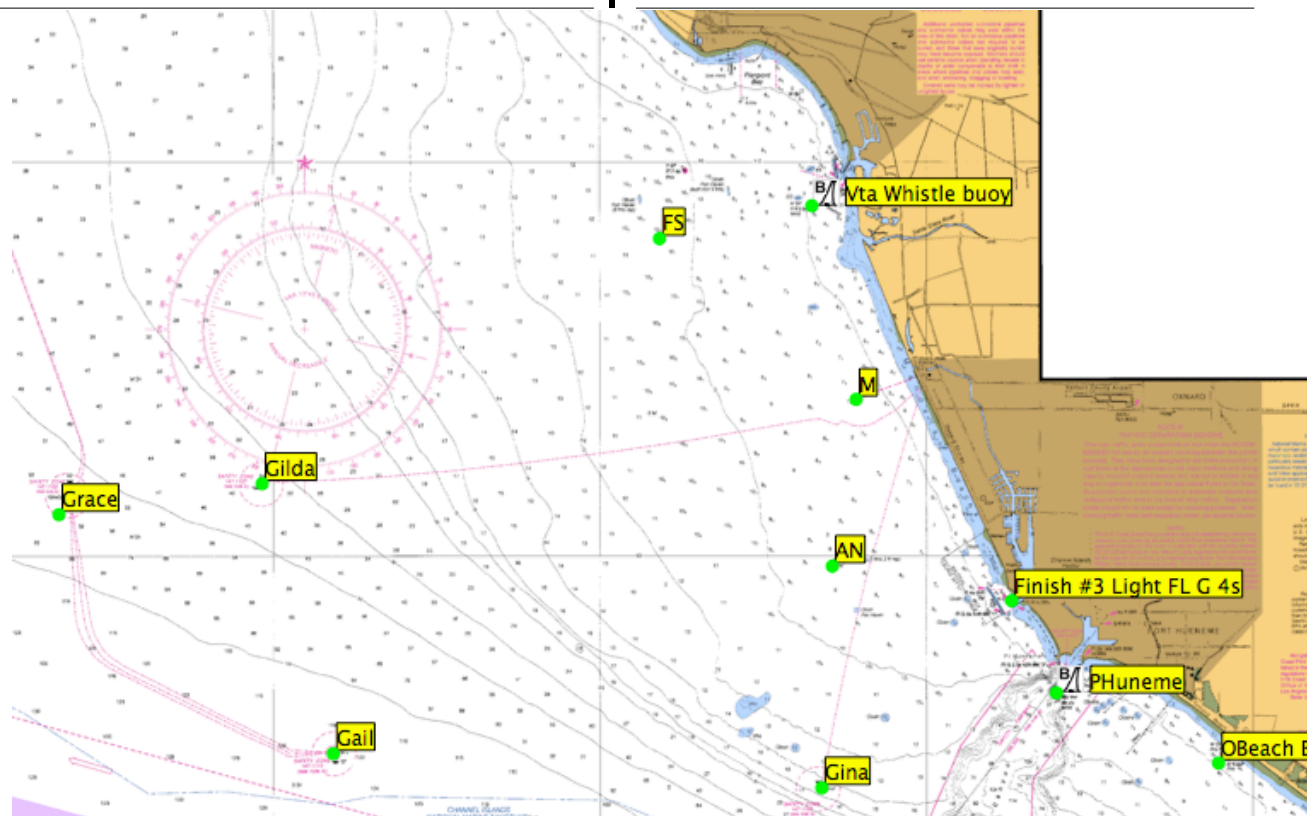


PCYC Course chart

McCune race

Course	Description (often spinnaker)	Distance	Course	Description (often non spin)	Distance
1	ST-GRp-Zp-OBp-ANp-F	39.6	10	ST-ANs-Vs-ANp-F	13.6
2	ST-GLp-Zp-OBp-F	32.2	11	ST-GAp-Zp-F	24.8
3	ST-GAp-Zp-OBp-F	29.1	12	ST-Vp-FSp-GIp-F	16.1
4	ST-ANp-PHs-GIp-OBp-F	17.5	13	ST-GIp-OBp-PHs-TMp-F	20.2
5	ST-GIs-Vs-OBp-F	25.1	14	ST-PHp-OBp-PHs-F	11.1
6	ST-PHp-Vs-PHp-F	20.3	15	ST-GAs-GIp-PHp-F	18.8
7	ST-TMs-PHs-GIp-PHs-OBs-PHp-GIs-F	22.9	16	ST-GIp-PHp-F	10.0
8	ST-GAp-GIp-PHp-F	18.8	17	ST-TMs-ANp-PHp-TMs-F	14.0
9	ST-ANp-PHs-GIp-OBp-F	17.5			



- ST Start
- AN Anacapa YC spar buoy, or "Wes" mark
- FS Fish Sticks Spar Buoy
- GA Platform Gail
- GI Platform Gina
- GL Platform Gilda
- GR Platform Grace
- TM Inflatable mark near M

- V Ventura Harbor Whistle Buoy R2
- M Mandalay Spar Buoy
- OB Ormond Beach Buoy, Red
- PH Port Hueneme Whistle Buoy
- Z Inflatable mark near Arch Rock off Anacapa Island
- F Finish

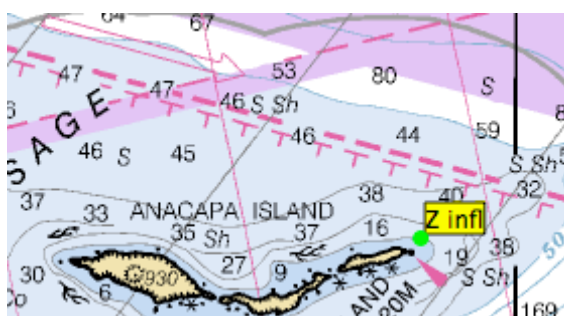


Mark ID	Mark Description	Approximate position	
		Latitude	Longitude
AN	Anacapa YC spar buoy, or "Wes" mark	34N 09.798	119W 16.390
FS	Fish Sticks Spar Buoy	34N 14.042	119W 19.550
GA	Platform Gail	34N 07.484	119W 24.075
GI	Platform Gina	34N 07.066	119W 16.607
GL	Platform Gilda	34N 10.924	119W 25.165
GR	Platform Grace	34N 10.534	119W 28.287
V	Ventura Harbor Whistle	34N 14.033	119W 16.725
M	Mandalay Spar Buoy	34N 11.963	119W.16.390
TM	Inflatable mark set near M	34N 12.200	118W 21.384
OB	Ormond Beach Buoy Red N "OB2"	34N 07.364	119W 10.531
PH	Port Hueneme Whistle Buoy	34N 08.252	119W 13.004
Z	Inflatable mark set off Arch Rock near Anacapa Island	34N 01.118	119W 21.384
ST	Pin end of Start Line		
F	Finish		

Degrees, minutes and hundredths of minutes
 One second of Lat Lon = about 0.0166 decimal minutes

Class flags

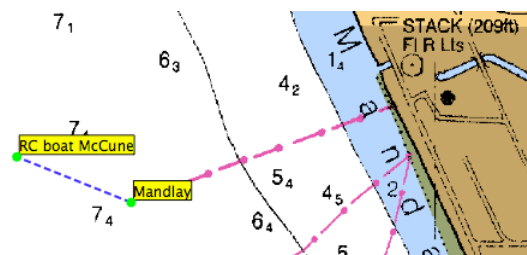
- Class A** Yellow
- Class B** Red
- Class C** White
- Class D** Green
- Class E** Pink
- Class F** Blue



Start - finish configuration

ST pin Mandalay ----- RC boat

Start from this side of the line
 RC boat is starboard end



Starting Line

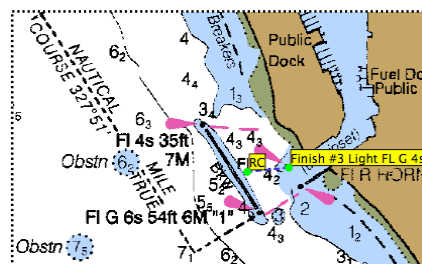
is between the RC boat and the Mandalay spar buoy offshore of the power plant. At approximately

34N 11.963
119W.16.390



Finish

RC inshore of Channel Islands detached breakwater to #3 light on rock jetty FL green 4 second



Should weather or other condtions cause the RC boat to be missing, the RC may use the optional finish line by making an announcemnt on VHF 68.

The optional finish line is from:

a vehicle parked at the end of South Harbor Blvd across the channel to the #4 Red marker. There will be NO adjustment to the handicaps or lengths of the courses.