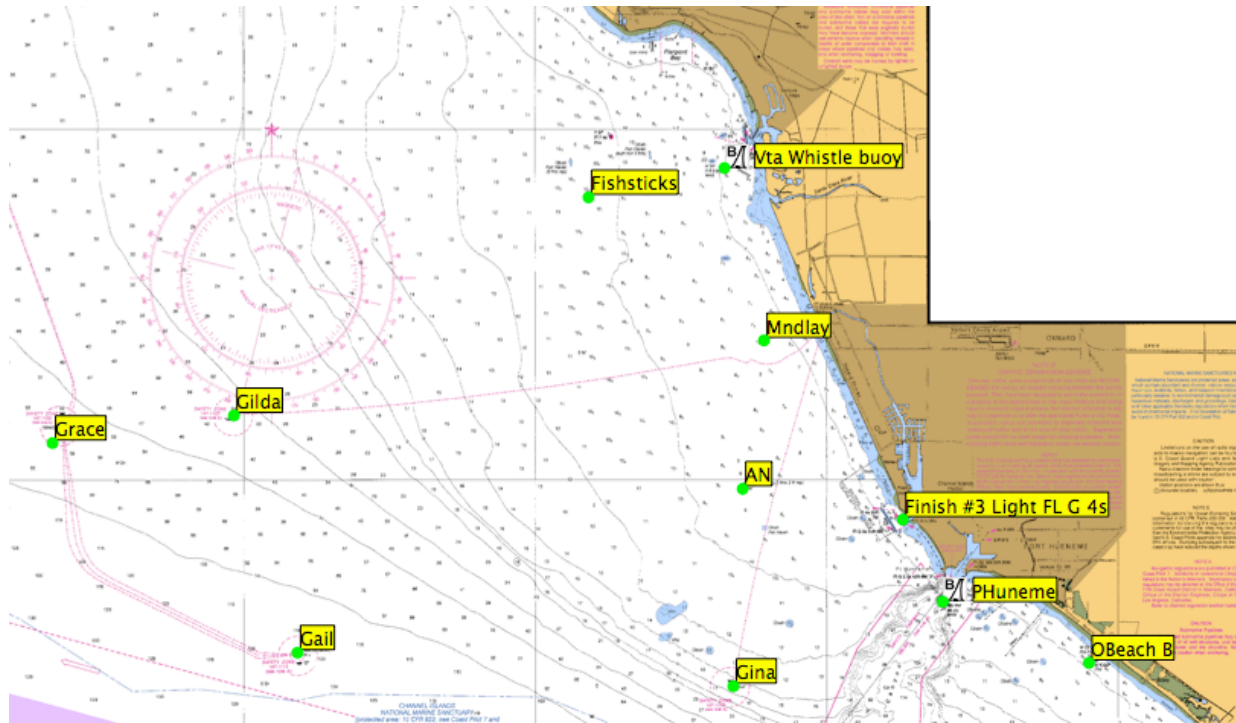


PCYC Course chart

CHRF races

Course	Description	Distance	Course	Description	Distance
1	ST-ANs-Vs-F	11.7	23	ST-ANs-Vs-ANp-F	13.0
2	ST-ANs-FSs-F	13.2	24	ST-ANp-PHp-F	6.6
3	ST-GAs-GLs-F	21.1	25	ST-ANp-GIp-PHp-F	9.4
4	ST-GIs-ANp-Ms-F	11.2	26	ST-ANp-GIp-ANs-F	9.6
5	ST-GLs-FSs-F	21.2	27	ST-ANs-Vp-GLp-F	23.6
6	ST-GRp-GAp-F	24.7	28	ST-GLs-Vs-F	22.2
7	ST-GIp-ANs-F	8.1	29	ST-Vs-F	10.7
8	ST-GIp-F	6.5	30	ST-PHp-ANs-F	10.4
9	ST-GAp-F	16.7	31	ST-ANp-GLp-F	18.4
10	ST-GLp-F	18.3	32	ST-GIp-Zp-OBp-F	24.8
11	ST-GRp-F	23.1	34	ST-ANp-PHs-GIp-OBp-F	16.9
12	ST-ANp-Vp-F	11.7	35	ST-GIs-Vs-OBp-F	23.0
13	ST-GIs-ANp-Ms-ANp-F	11.8	36	ST-PHp-Vs-PHp-F	17.2
14	ST-ANs-Ms-F	7.0	37	ST-ANp-GIp-F	8.1
15	ST-ANp-PHp-F	6.5	38	ST-Vp-FSp-GIp-F	18.7
16	ST-Mp-ANp-PHp-F	9.9	39	ST-GIp-OBp-PHs-TMp-F	18.9
17	ST-PHp-F	3.4	40	ST-PHp-OBp-PHs-F	7.9
18	ST-Mp-GIp-F	11.3	41	ST-GAp-GIp-PHp-F	19.7
19	ST-Mp-GIp-PHp-F	12.7	42	ST-GIp-PHp-F	8.4
20	ST-Mp-ANp-F	7.2	43	ST-TMs-ANp-PHp-TMs-F	13.9
21	ST-Mp-ANp-Ms-F	10.3	45	ST-FSp-F	6.7



- | | |
|---|---|
| <p>ST Start</p> <p>AN Anacapa YC spar buoy, or "Wes" mark</p> <p>FS Fish Sticks Spar Buoy</p> <p>GA Platform Gail</p> <p>GI Platform Gina</p> <p>GL Platform Gilda</p> <p>GR Platform Grace</p> | <p>V Ventura Harbor Whistle Buoy R2</p> <p>M Mandalay Spar Buoy</p> <p>OB Ormond Beach Buoy</p> <p>PH Port Hueneme Whistle Buoy</p> <p>F Finish</p> <p>N Inflatable Mark near North end of detached Ch. Island breakwater</p> |
|---|---|



PCYC Course chart

CHRF races

Mark ID	Mark Description	Approximate position	
		Latitude	Longitude
AN	Anacapa YC spar buoy, or "Wes" mark	34N 09.798	119W 16.390
FS	Fish Sticks Spar Buoy as of 3/2007	34N 14.450	119W 19.866
GA	Platform Gail	34N 07.484	119W 24.075
GI	Platform Gina	34N 07.066	119W 16.607
GL	Platform Gilda	34N 10.924	119W 25.165
GR	Platform Grace	34N 10.534	119W 28.287
V	Ventura Harbor Whistle	34N 14.033	119W 16.725
M	Mandalay Spar Buoy	34N 11.963	119W.16.390
N	Inflatable Mark near North end of Channel Island detached breakwater		
OB	Red N "OB2"	34N 07.364	119W 10.531
PH	Port Hueneme Whistle	34N 08.252	119W 13.004
ST	Pin end of Start Line	Degrees, minutes and hundredths of minutes	
F	Finish	One second of Lat Lon = about 0.0166 decimal minutes	

Start - finish configuration

ST pin ----- RC



Start from this side of the line
RC is starboard end

Class flags

- Class A Yellow
- Class B Red
- Class C White
- Class D Green
- Class E Pink
- Class F Blue

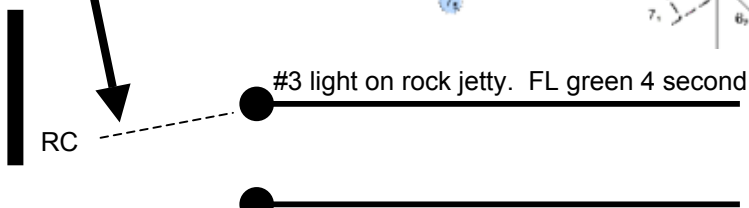
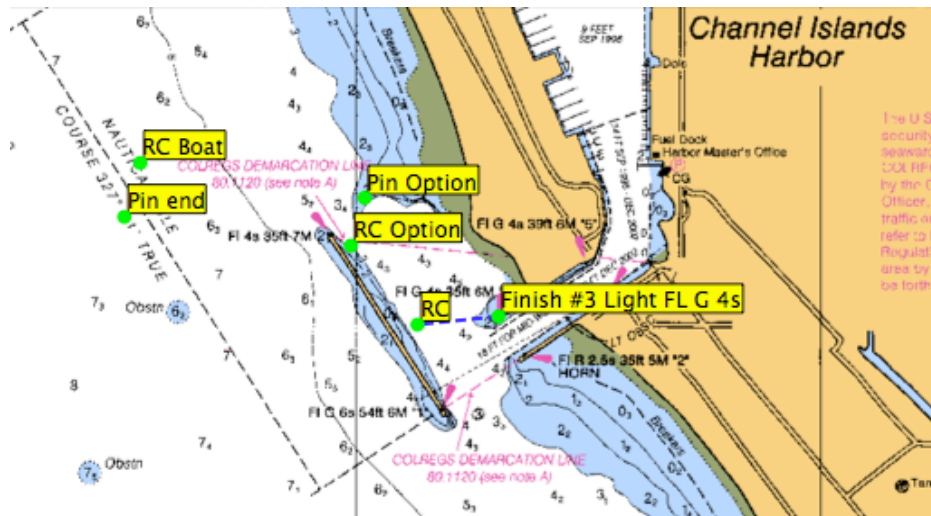
Starting Line

is approximately
1/4 NM off
Channel Islands Harbor
breakwater
at approximately
34° 09.50N
119° 14.50W



Finish

RC inshore of Channel
Islands breakwater
for finish line



Should weather or other conditions cause the RC to use the optional start or finish line behind the detached breakwater, there will be NO adjustment to the handicap lengths of the courses nor change to the way handicaps are assigned or calculated